



1758 John Muir Circle SE, Salem, OR 97302 | 2,102 square feet | 2-Level | 4 bedrooms | 2.5 bathrooms

The Net Zero home is a perfect mix of luxury and efficiency in a modern craftsman style. Its spacious open plan design allows for plenty of natural light and wonderful views of the beautiful community. Built to the highest possible quality and energy efficient standards it is a safe, comfortable and healthy home for you and your family. With its innovative ICF construction this home is as energy efficient as they come, reducing utility bills by up to 40%. Located on John Muir Circle in the stunning, award winning, sustainable development, Pringle Creek Community, it offers great amenities in an urban oasis setting.



Jonathan Schachter
Director of Development
Jonathan@pringlecreek.com
503-315-1055

Home Details

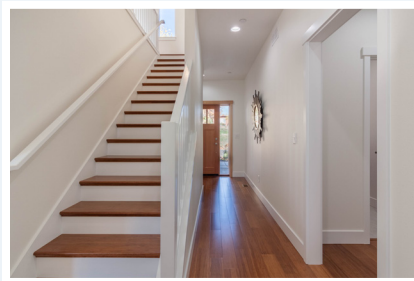
- Open plan with views
- Master on main
- Bonus/flex room option
- Private back patio and backyard
- Sustainable finishes throughout
- Energy efficient appliances
- Attached garage
- ICF Construction

Community Details

- Located in award-winning neighborhood inspired by nature, community, and innovation
- Walking paths and trails, courtyards, tree groves, and creek
- Urban farm with orchards, greenhouse for year-round gardening, and farm-fresh eggs
- Community center and events space
- Solar Ready

Net Zero

1758 John Muir Circle SE, Salem, OR 97302 | 2,102 square feet | 2-Level | 4 bedrooms | 2.5 bathrooms



info@pringlecreek.com | pringlecreek.com | 3911 Village Center SE, Salem, OR 97302

Net Zero

1758 John Muir Circle SE, Salem, OR 97302 | 2,102 square feet | 2-Level | 4 bedrooms | 2.5 bathrooms

Lot Map

- Lots for Sale
- Homes for Sale
- Pending
- Just Sold Lot &/or Home
- Existing Homes
- Net Zero Home Lot Option

